

CICERO FIRE DEPARTMENT

Department Procedural Order		Date of Issue	Effective Date	Order Number
Subject:	Safe Parking While Operating in or Near Traffic Vehicles	09/05/19	09/05/19	19-003
Amends:		Rescinds:		Page 1

I. Purpose:

This procedure identifies parking practices for Fire Department apparatus that will provide maximum protection and safety for personnel operating in or near moving vehicle traffic. It also identifies several approaches for individual practices to keep firefighters safe while exposed to vehicle traffic.

It shall be the policy of the Cicero Fire Department to position apparatus at the scene of emergencies in a manner that best protects the work area, patients and emergency personnel from vehicle traffic and other hazards.

All personnel should understand and appreciate the high risk that firefighters are exposed to when operating in or near moving vehicle traffic. We should always operate from a defensive posture. Always consider moving vehicles as a threat to your safety. Each day, emergency personnel are exposed to motorists of varying abilities, with or without licenses, with or without legal restrictions, and driving at speeds ranging from creeping to well beyond the speed limit. Some of these motorists could be the vision impaired, or may even be alcohol and/or drug impaired. On top of everything else, motorists will often be looking at the scene and not the road.

Nighttime operations are particularly hazardous. Visibility is reduced, and the flashing of emergency lights tends to confuse motorists. Studies have shown that multiple headlights of emergency apparatus (coming at different angles at the scene) tend to blind drivers as they approach.

II. Safety Benchmarks:

Emergency personnel are at great risk while operating in or around moving traffic. There are approaches that can be taken to protect yourself and all crewmembers:

CICERO FIRE DEPARTMENT

Department Procedural Order		Date of Issue	Effective Date	Order Number
Subject:	Safe Parking While Operating in or Near Traffic Vehicles	09/05/19	09/05/19	19-003
Amends:		Rescinds:		Page 2

II. Safety Benchmarks (cont.):

- Never trust the traffic
- Engage in proper protective parking
- Always wear ANSI-compliant high visibility reflective vests
- Reduce motorist vision impairment
- Use traffic cones (and flares where appropriate)

Listed below are benchmarks for safe performance when operating in or near moving vehicle traffic.

- Always maintain an acute awareness of the high risk of working in or around moving traffic. Never trust moving traffic. Always look before you step! Always keep an eye on the traffic!
- Always position apparatus to protect the scene, patients, emergency personnel, and provide a protected work area. Where possible, angle apparatus at 45 degrees away from the curbside. This will direct motorist around the scene (See Figure 1). Apparatus positioning must also allow for adequate parking space for other fire apparatus (if needed), and a safe work area for emergency personnel. Allow enough distance to prevent a moving vehicle from knocking fire apparatus into the work areas.
- At intersections, or where the incident may be near the middle of the street, two or more sides of the incident may need to be protected. Block all exposed sides. Where apparatus is in limited numbers, prioritize the blocking from the most critical to the least critical (See Figures 2, 3, and 4)
- For first arriving engine companies, where a charged hose line may be needed, angle engine so that the pump panel is “downstream”, on the opposite side of on-coming traffic. This will protect the pump operator (See Figure 5).

CICERO FIRE DEPARTMENT

Department Procedural Order		Date of Issue	Effective Date	Order Number
Subject:	Safe Parking While Operating in or Near Traffic Vehicles	09/05/19	09/05/19	19-003
Amends:		Rescinds:		Page 3

- The initial company officer (or Command) must assess the parking needs of later-arriving fire apparatus and specifically direct the parking and placement of these vehicles as they arrive to provide protective blocking on the scene. This officer must operate as the initial safety officer.
- During daytime operations, leave all emergency lights on to provide warning to drivers.
- For NIGHTTIME operations, turn OFF fire apparatus headlights. This will help reduce the blinding effect to approaching vehicle traffic. Other emergency lighting should be reduced to yellow lights and/or emergency flashers when possible.
- Crews should exit the curb side or non-traffic side of the vehicle whenever possible.
- Always look before stepping out of apparatus, or into any traffic areas. When walking around fire apparatus parked adjacent to moving traffic, keep an eye on traffic and walk as close to fire apparatus as possible.
- Always wear an ANSI-compliant safety vest any time you are operating in or near vehicle traffic.
- When parking apparatus to protect the scene, be sure to protect the work area also. The area must be protected so that patients can be extricated, treated, moved about the scene and loaded into ambulances safely.
- Once enough fire apparatus have “blocked” the scene, park or stage unneeded vehicles off the street whenever possible. Bring in Fire and/or Ambulance companies one or two at a time and park them in safe locations at the scene. This may be “downstream” from other parked apparatus, or the Engine/Truck may be backed at an angle into a protected loading area to prevent working in or near passing traffic.
- At residential medical emergencies, park the Engine and/or Truck in such a way as to best protect patient loading areas. (See Figure 6)

CICERO FIRE DEPARTMENT

Department Procedural Order		Date of Issue	Effective Date	Order Number
Subject:	Safe Parking While Operating in or Near Traffic Vehicles	09/05/19	09/05/19	19-003
Amends:		Rescinds:		Page 4

- Place traffic cones at the scene to direct traffic. This should be initiated by the first company arriving on the scene and expanded, if needed, as later arriving companies arrive on the scene. Always place and retrieve cones while facing on-coming traffic.
- The placement of traffic cones for nighttime operations greatly enhances scene safety. Listed below are some general recommendations for the start of traffic cones:

<u>Speed</u>	<u>Distance</u>
25 mph	65 feet
40 mph	105 feet
60 mph	160 feet

- At major intersections, it may be necessary for F-12 (or incident Command) to contact Cicero Police and/or Community Service Officers (CSOs) to assist with traffic control. F-12 or Command shall provide specific directions to the police and/or CSOs as to exactly what the traffic control needs are. Ensure that police and/or CSOs are parking to protect themselves and the scene. Position Engines, Trucks, and Ambulances to protect patient loading areas. (See Figure 7)

III. Four-Lane Roadways:

Traffic accidents and emergencies that occur on four-lane roadways pose a particularly high risk to emergency personnel. Speeds tend to be higher, traffic volume is significant, and motorists sometimes have little opportunity to slow, stop, or change lanes.

Where need be, the four-lane roadway can be completely shut down.

Coordinated efforts between both the Cicero Fire and Police departments will ensure the proper placement of vehicles and personnel to safely & completely shut down the four-lane roadway to protect the accident scene.

CICERO FIRE DEPARTMENT

Department Procedural Order		Date of Issue	Effective Date	Order Number
Subject:	Safe Parking While Operating in or Near Traffic Vehicles	09/05/19	09/05/19	19-003
Amends:		Rescinds:		Page 5

III. Four-Lane Roadways (cont.):

For four-lane emergencies, we will continue to block the scene with the first apparatus on the scene, to provide a safe working area. As stated in Cicero Fire Department SOP 19-002, the minimum required emergency response to any vehicle accident with potential injury on all roadway and intersection types, including four-lane roadways will be:

- One (1) Engine Company (following fire district boundaries)
- One (1) Truck Company (area truck company by district)
- One (1) Ambulance (initially; more may be dispatched as needed)
- One (1) Platoon Chief (F-12)

Other companies (i.e. additional Engines and/or Ambulances) may be dispatched to provide additional protection and patient care if needed. The initial company officer, or Command, must thoroughly assess the need for apparatus on the four-lane roadway and their specific positions. Companies should be directed to specific parking locations to protect the work area, patients and emergency personnel. Other apparatus should be parked “downstream” when possible. This provides a safe parking area.

Staging of Engine, Truck and/or Ambulance companies off of the four-lane roadway may be required. Additional emergency apparatus should be brought into the scene one or two at a time. A safe loading area must be established.

Traffic cones should be placed farther apart, with the last cone approximately 160 feet “upstream”, to allow adequate warning to drivers. Place and retrieve cones while facing the traffic.

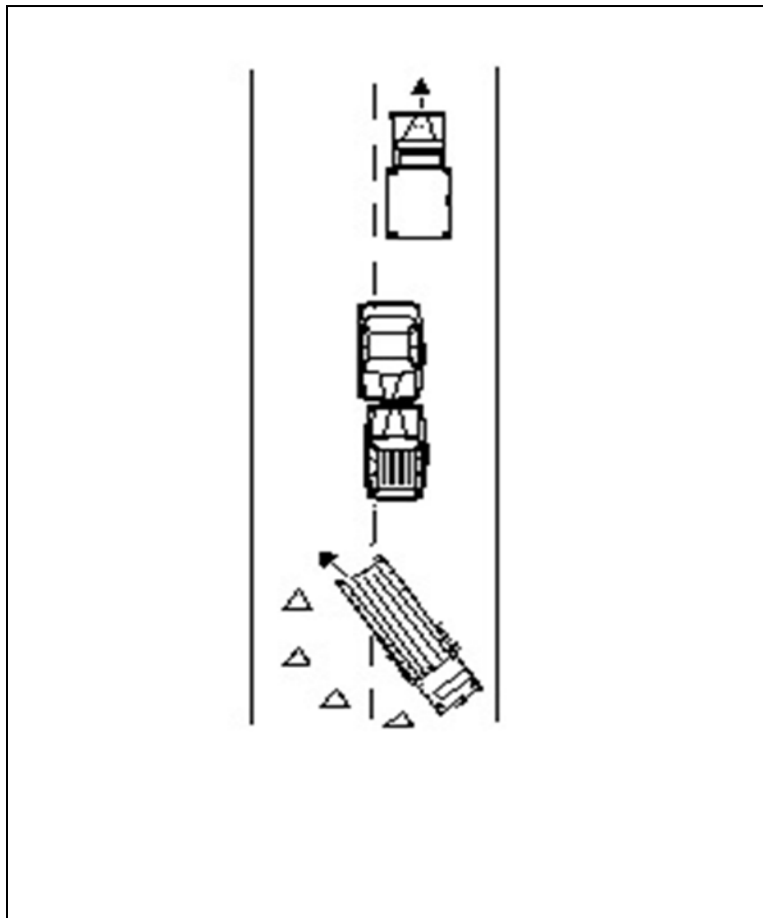
Command should establish a liaison with the Police Department and/or Community Service Officers as soon as possible to jointly provide a safe parking and work area and to quickly resolve the incident. The termination of the incident must be managed with the same aggressiveness as initial actions. Crews, apparatus, and equipment must be removed from four-lane roadway promptly to reduce exposure to moving traffic.

CICERO FIRE DEPARTMENT

Department Procedural Order		Date of Issue	Effective Date	Order Number
Subject:	Safe Parking While Operating in or Near Traffic Vehicles	09/05/19	09/05/19	19-003
Amends:		Rescinds:		Page 6

IV. Emergency and Accident Figures/Diagrams:

Figure #1



Where possible, angle apparatus at a 45 degree angle from the curb.

CICERO FIRE DEPARTMENT

Department Procedural Order		Date of Issue	Effective Date	Order Number
Subject:	Safe Parking While Operating in or Near Traffic Vehicles	09/05/19	09/05/19	19-003
Amends:		Rescinds:		Page 7

Figure #2

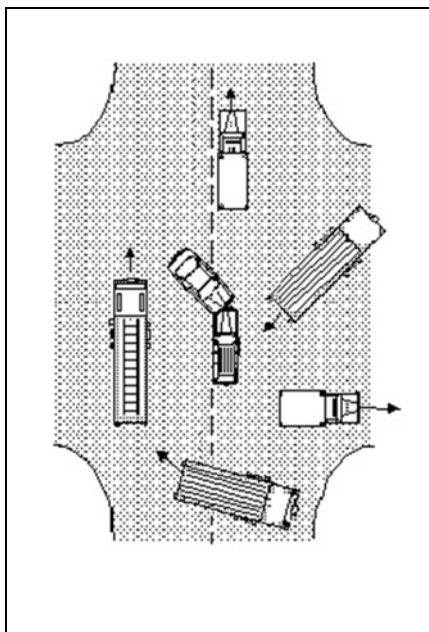


Figure #3

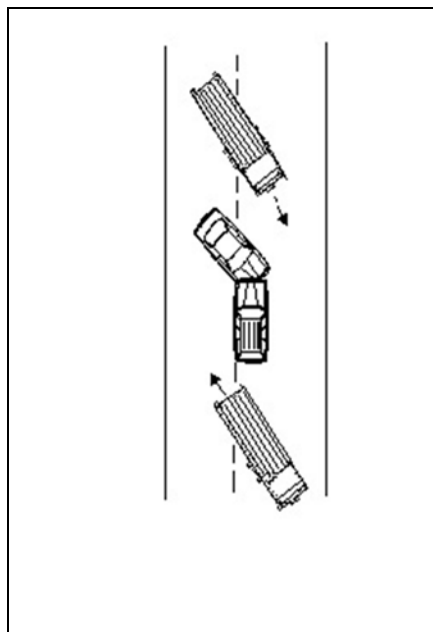
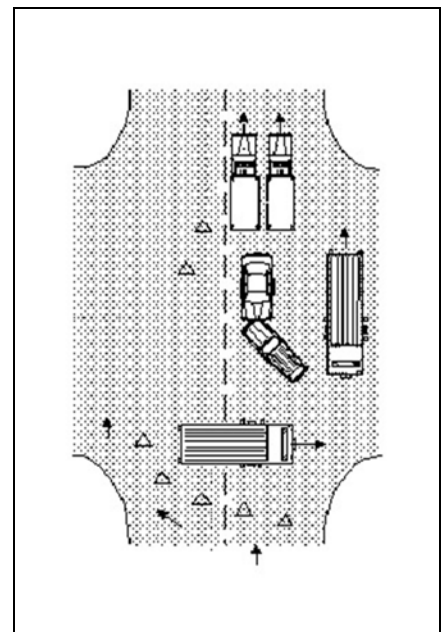


Figure #4

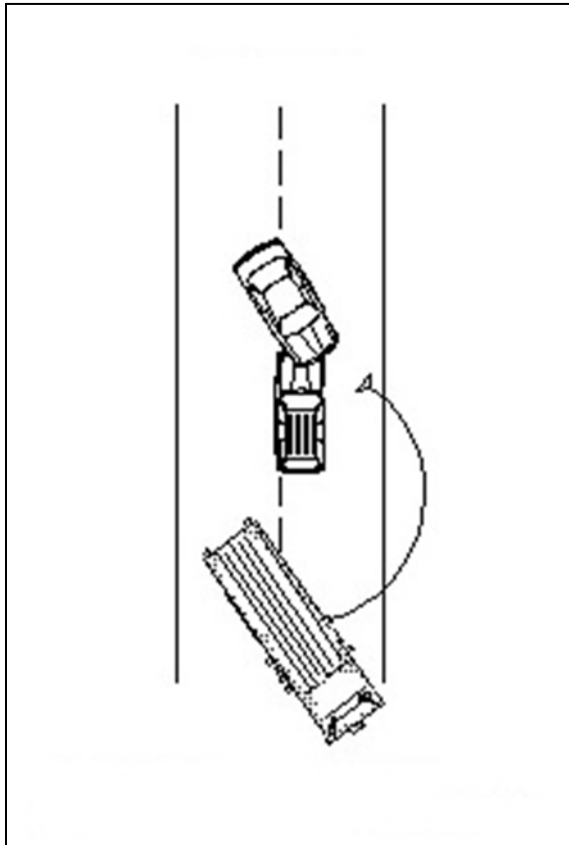


Oftentimes two or more sides may need to be protected. Prioritize placement of the apparatus by blocking from the most critical to the least critical side.

CICERO FIRE DEPARTMENT

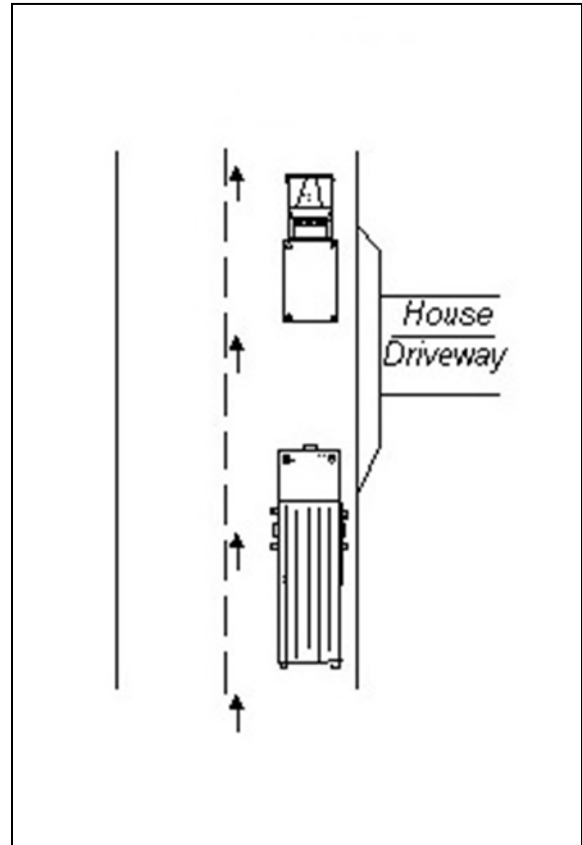
Department Procedural Order		Date of Issue	Effective Date	Order Number
Subject:	Safe Parking While Operating in or Near Traffic Vehicles	09/05/19	09/05/19	19-003
Amends:		Rescinds:		Page 8

Figure #5



To protect pump operator, position apparatus with the pump panel on the opposite side of on-coming traffic.

Figure #6

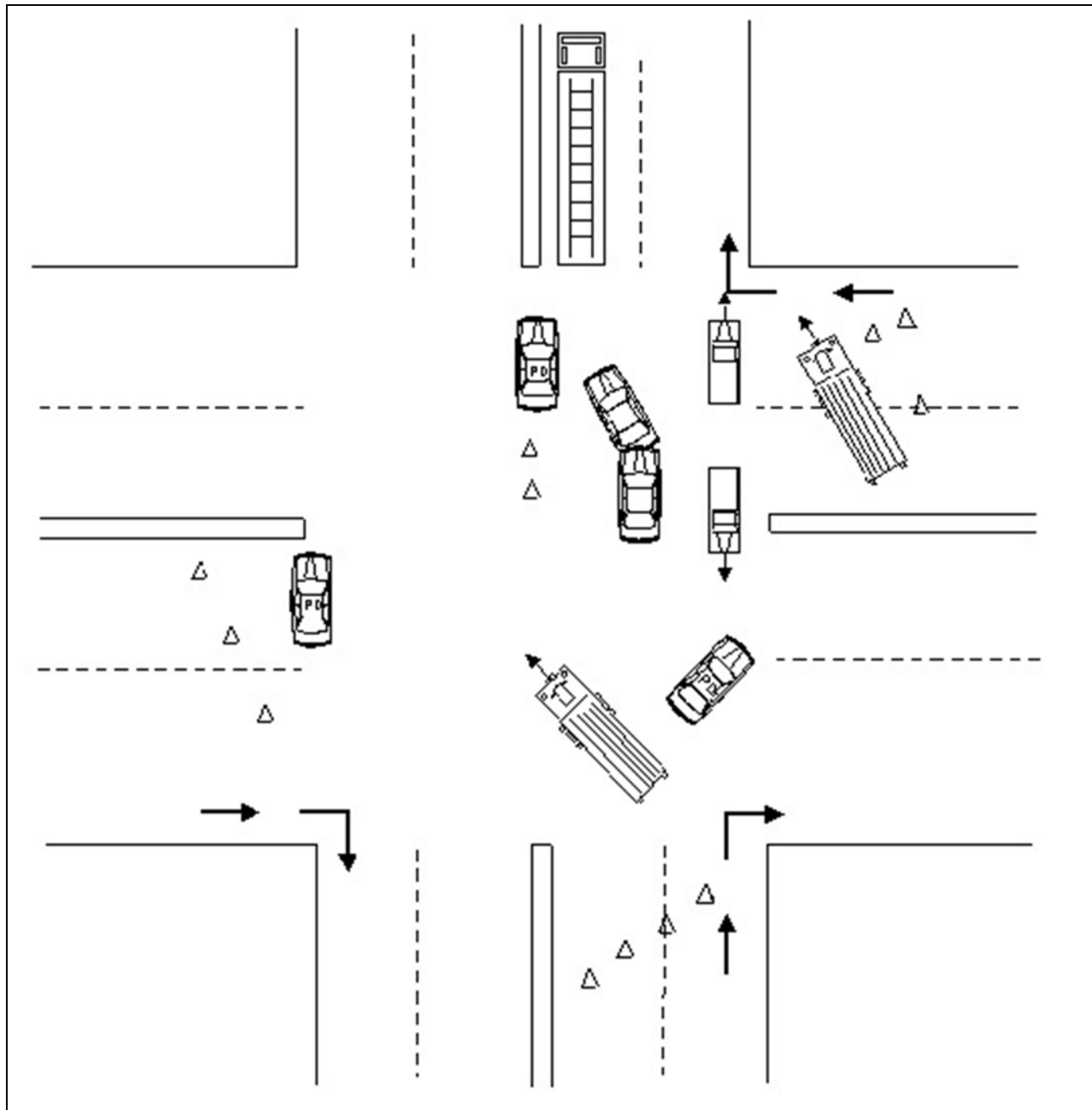


Where possible, park EMS and Engine/Truck Companies directly in front of residence to protect patient loading areas.

CICERO FIRE DEPARTMENT

Department Procedural Order		Date of Issue	Effective Date	Order Number
Subject:	Safe Parking While Operating in or Near Traffic Vehicles	09/05/19	09/05/19	19-003
Amends:		Rescinds:		Page 9

Figure #7



Provide specific direction to Cicero Police and/or CSOs as to what traffic control needs you have. Position EMS and Engine/Truck Companies to protect patient loading areas.

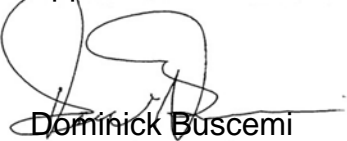
CICERO FIRE DEPARTMENT

Department Procedural Order		Date of Issue	Effective Date	Order Number
Subject:	Safe Parking While Operating in or Near Traffic Vehicles	09/05/19	09/05/19	19-003
Amends:		Rescinds:		Page 10

V. Responsibility:

- A. It shall be the responsibility of each member of the Cicero Fire Department to follow this procedure and to operate within defined guidelines.
- B. It shall be the responsibility of the Officer in charge of each Fire Station to ensure that the Fire Department members are familiar with this procedure and are operating within defined guidelines.
- C. It shall be the responsibility of the On-Duty Assistant Chief to assure that all Fire Department members are adhering to this procedure and are operating within defined guidelines.

Approved



Dominick Buscemi
Fire Chief